

IMPORTANT FACTS ABOUT THE ISO/IEC 17025:2017 TRANSITION

By Shadrack Phophi

It is already 3 months since SANAS started assessing all ISO/IEC 17025 accredited Conformity Assessment Bodies (CABs) against the 2017 version. This transition affects more than 660 accredited CABs. As communicated through the bulletin that was published in July 2018, by **31st July 2020** all these accredited CABs should have been assessed against ISO/IEC 17025:2017. During the on-site assessment, SANAS assessment team's mandate is to verify that all new requirements have been fully documented and implemented. CABs should not use assessments for gap analysis but to demonstrate to the assessors that they have in cooperated the new requirements in their management system. Only once the CAB has demonstrated successful transition and effective implementation of ISO/IEC 17025:2017 and the decision by the SANAS Approval Committee, will the Certificate and Scope of Accreditation be adapted to reflect accreditation to ISO/IEC 17025:2017.

Recently we have noted with great concern that some CABs think that they are only required to prove to SANAS that they have documented and implemented the new requirements by the cut-off date of **30 November 2020**. This notion goes totally against what we have communicated previously. By the cut-off date, all accredited laboratories should have transitioned successfully from the 2005 to 2017 version. It means, therefore, that by the cut-off date all accreditation processes (e.g. onsite-assessments; clearance of non-conformances and approval) should have been completed hence the 31 July 2020 was given as the due date for

assessments. The remaining four months i.e. August – November 2020, will be used to clear any backlog we would have incurred.

It is also worth remembering that testing and calibration assessment interval is between 18 – 21 months not 12 months. Therefore, CABs have only “**one shot**” (i.e. one assessment) to demonstrate that they have indeed documented and implemented the ISO/IEC 17025:2017 requirements. The “one shot” referred to above is all assessments planned from 01 December 2018 – 31 July 2020. Considering these tight schedules, CABs are really urged to use the opportunities presented through the scheduled assessments to their advantage by ensuring that they have documented and implemented the new requirements. **If during the on-site assessment the CAB fails to demonstrate that it has documented and implemented the new requirements, an extra visit will be arranged, and the costs associated with this visit will be for the CAB's account.**

For more information on how SANAS is handling the ISO/IEC 17025:2017 transition please get a copy of the TG 52 document from the SANAS website – www.sanas.co.za. This technical guidance document identifies the clauses of ISO/IEC 17025:2017 and provides SANAS opinion on the broad extent of any changes in requirements from ISO/IEC 17025:2005. Granular details of the actual changes are not provided and accordingly, the CAB will need to conduct a GAP analysis (self-assessment) against the ISO/IEC 17025:2017 and ISO/IEC 17025:2005.



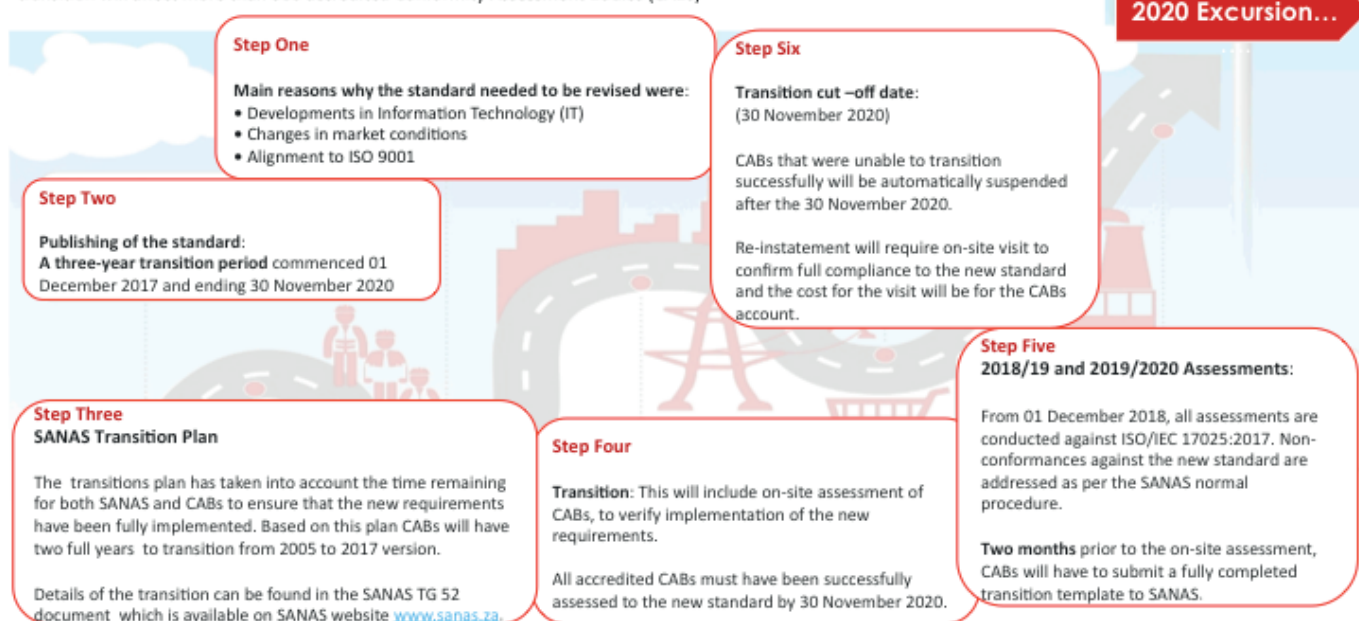
FACTS ABOUT THE ISO/IEC 17025:2017 TRANSITION

- From 01 December 2018, all assessments are conducted against the ISO/IEC 17025:2017.
- Assessments are meant for SANAS to confirm implementation of ISO/IEC 17025:2017 requirements and CABs should not use them for GAP analysis (Self-assessment).
- All findings raised against ISO/IEC 17025:2017 shall be handled as non-conformances, where the submission of corrective actions to SANAS will be required.
- All accredited CABs are required to fully complete the transition template (as an MS Word document) and submit it to SANAS **2 months** prior to the on-site visit detailing the modifications made to their management systems following the gap analysis (self-assessment) between the 2005 and 2017 standards.
- By the **31 July 2020**, all accredited CABs should have been assessed against the ISO/IEC 17025:2017.
- The transition cut-off date is **30 November 2020**.
- CABs that will fail to transition to the ISO/IEC 17025:2017 within the given transition period i.e. 30 November 2020, will be automatically suspended. Re-instatement will require an onsite visit to confirm full compliance to the new standard and the costs of which to be borne by the CAB.
- Only once the laboratory has demonstrated successful transition and effective implementation of ISO/IEC 17025:2017 and the decision by the SANAS Approval Committee is for the continuation / maintenance / renewal of accreditation, the Certificate and Scope of Accreditation will be adapted to reflect accreditation to ISO/IEC 17025:2017.
- The five (5) year assessment cycle will remain unchanged, i.e. a 5-year cycle will not automatically commence on the date of accreditation to ISO/IEC 17025:2017. This will only happen in the case of initial and reassessments.

TRANSITION FROM ISO/IEC 17025:2005 TO ISO/IEC 17025:2017

The review of the ISO/IEC 17025 was started in February 2015 and culminated into the publication of the new version on the 30 November 2017. The last revision was published in 2005, consequently, there was a pressing need for the standard to be revised. This transition will affect more than 600 accredited Conformity Assessment Bodies (CABs)

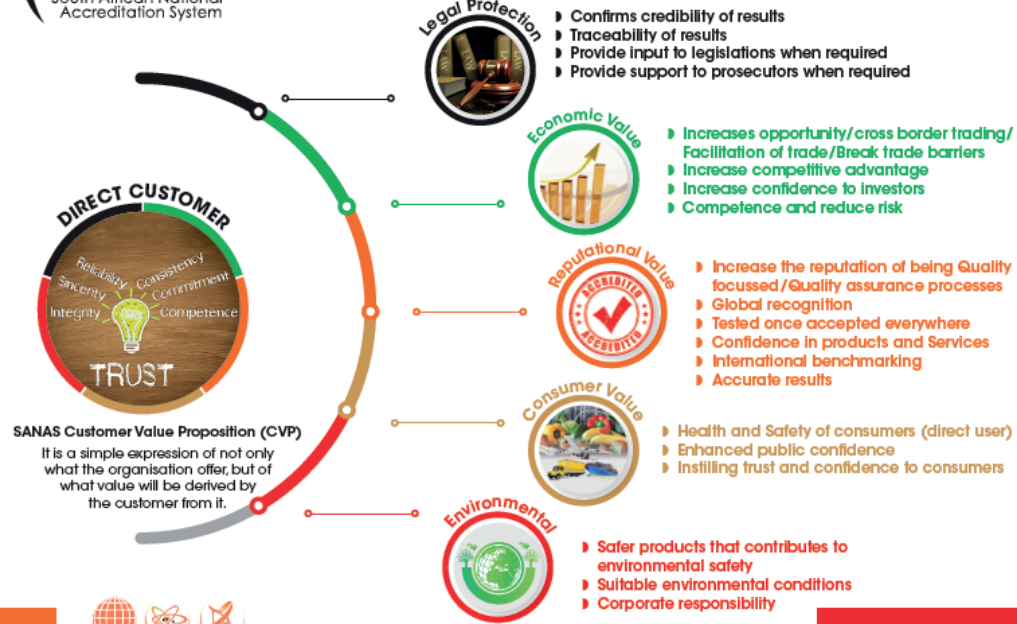
Source: Shadrack Phaphi
Compiled by: Nombongo Ngobe



OUR CVP HAS GONE LIVE



CUSTOMER VALUE PROPOSITION (CVP)



CONTACT INFORMATION

SANAS website: www.sanas.co.za | **Main Switchboard No:** +27 (0) 12 740-8400

Physical Addresses: Libertas Office Park | cnr Libertas and Highway Street | Equestria | 0184

